

9 May 2026



Experience the best of farming & rural
life from your county

Newark Showground

nottinghamshirecountyshow.com



School Resource Pack

8
COMPETITIONS
— DETAILS
INSIDE

PLUS ONE
FOR THE
ADULTS

 **Newark & Notts**
Agricultural Society

In partnership with



Nottinghamshire
County Council





ABOUT US

Nottinghamshire County Show will be at Newark Showground on the 9 May 2026, one of the first big agricultural shows of the season!

Every year, the show highlights the vital role of agriculture in our lives.

Celebrating everything from food production to the beauty of our local countryside, reminding us just how essential farming is for our economy, food industry and our daily life.

Showcasing the best of farming, countryside and rural life, celebrating our local agricultural community with attractions including livestock, equine, local food producers and craft stalls, countryside competitions, traders and more!

For more information, please visit:

www.nottinghamshirecountyshow.com

HOW THIS PACK WORKS

This pack is designed to help teachers and parents get young people (4-14) involved and get excited about the upcoming show, as well as, to help educate them on farming and the countryside.

You will find lots of information about the Nottinghamshire County Show and farming, along with a host of activities and competitions to help support their understanding, raise awareness and interest in agriculture, farming and rural life!

SOME FACTS ABOUT THE NOTTINGHAMSHIRE COUNTY SHOW



The 2026 show will be the 141st!
The first-ever show was held in 1868,
however, over the years, it has been
cancelled due to several factors,
including the World Wars, Foot
& Mouth disease and COVID-19.

 Newark & Notts
Agricultural Society



The show is organised by the Newark
& Notts Agricultural Society - a charity
dedicated to **promote, celebrate and**
champion agriculture across the
Midlands region and beyond.



It was originally called 'The Newark
Show' and renamed the
'Nottinghamshire County Show' in 1989.



FUN FACTS ABOUT LAST YEAR'S SHOW!


 Sunshine from dusk to dawn

 727 horses at the show

 2000 rosettes awarded

 622 pigs, cattle and sheep at the show

 Over 480 winners recognised over 20 rings

 More than 450 straw bales on site

 21 student education grants awarded

 8 individuals recognised for their Service to Agriculture

  Amazing support from 288 judges, stewards and volunteers

 6126 cars parked

 5000 bees & 1 queen bee



Nottinghamshire's Farming Facts



Agriculture contributes £228 million to the local economy



Nottinghamshire farmers produce 95,000 tonnes of potatoes each year



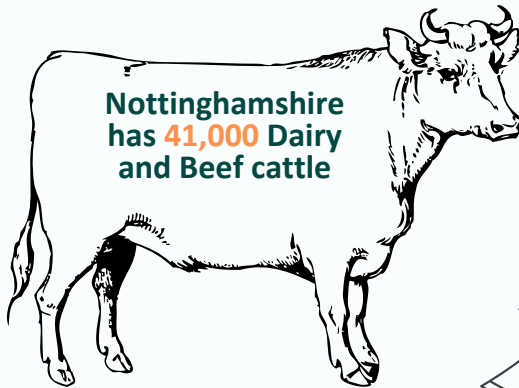
4,000 people are employed directly on our farms



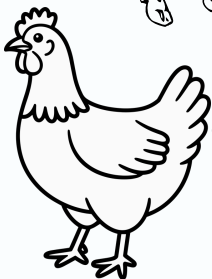
Nottinghamshire produces 40,000 tonnes of Chantenay carrots each year



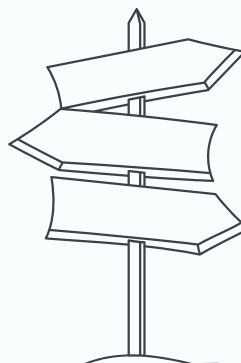
Nottinghamshire cows produce more than 105 million pints of milk each year



Nottinghamshire has 41,000 Dairy and Beef cattle



There are 700 poultry farms across the Midlands

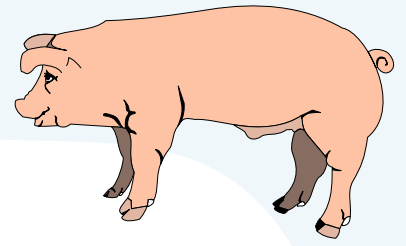


Our farmers help maintain 1,740 miles of public rights of way and 5,200 hectares farm woodland



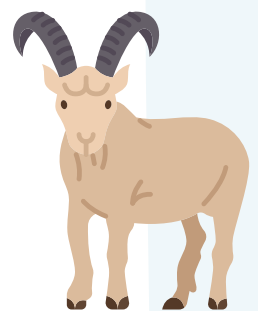
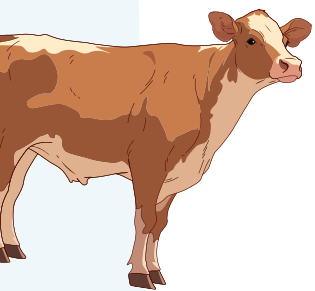
All facts provided by the National Farmers Union from 2025





KS3

11-14yrs



KS3:
11-14yrs

CLOSING DATE:
31 MARCH 2026

COMPETITION:

Design a Label for your
Company's Honey Jar

Bees play a vital role in farming and food production by pollinating crops, helping farmers grow food and giving us delicious honey.

Your challenge is to design a label for a jar of Nottinghamshire Honey that celebrates bees, farming and the countryside.

Your Label Should:

- Include a name for your honey and company - Try and make it Nottinghamshire related.
- Include a logo for your company
- Feature a drawing or design that reflects bees, a hive, flowers etc.
- Add a slogan or tagline – something catchy.
- Be bright and eye-catching, like a real product label you'd see on a market stall or shop shelf.

You can use the label template below or create your own, or design a digitally/animated one if you prefer. The winning entry will receive a family ticket to the Nottinghamshire County Show on 9 May at Newark Showground.



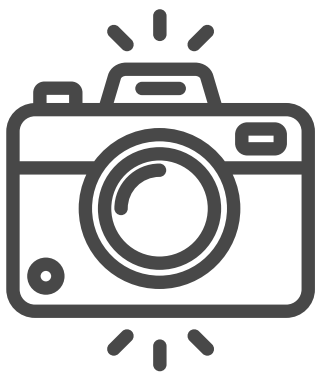
Name: _____ Age: _____ School: _____
Parent/Guardian signature: _____ Contact no/email: _____

A panel of judges will pick the winning honey jar. Please email your entry to show@newarkshowground.com with the subject header 'NCS Honey Jar' or send to: FAO Show Newark Showground, Lincoln Road, Newark, Nottingham, NG24 2NY (Only one entry per person). Closing date is 31 March 2026. Entries may be posted on our social media channels.

KS3:
11-14yrs

COMPETITION: Take your best photo of 'Farming in a frame'!

CLOSING DATE:
31 MARCH 2026



We want to see your best "Farming in a Frame" photo!

Capture anything that celebrates farming — from farmyard animals and rolling crops to hardworking machinery or even a windowsill planting. Big or small, traditional or modern, we want to see it all.

Show us what farming means to you and capture the true essence of Nottinghamshire's farming landscape. Submit your photo today!

The winning entry will receive a family ticket to the Nottinghamshire County Show, taking place on 9 May at Newark Showground.

A panel of judges will pick the winning photo. Please email your entry to show@newarkshowground.com with the subject header 'NCS Photography KS3' or send to: FAO Show Newark Showground, Lincoln Road, Newark, Nottingham, NG24 2NY (Only one entry per person). Please ensure to include your name, age, school, as well as a parent/guardian contact number or e-mail. Closing date is 31 March 2026. Entries may be posted on our social media channels.



Call: 01636 705796
Email: show@newarkshowground.com

For more
information
scan here:



Become a Member today and enjoy a host of benefits

Whether you're an industry professional, a rural family or a young farmer eager to sow the seeds of your future, we welcome you to embrace the future of farming together with us.

Join us and become a member.
newarkandnotts.com/become-a-member

Proud organiser of:



VIP Show Access

Enjoy free entry and exclusive access to the Members' Pavilion & Marquee, with prime views of the Main Ring at Nottinghamshire County Show. Plus VIP access to other Society shows.



Private Event Perks

Enjoy preferential rates for hiring rooms at the Showground!



Two-for-One Deals

Enjoy 2-for-1 tickets on select events like IACF!



Christmas Pre-Sale

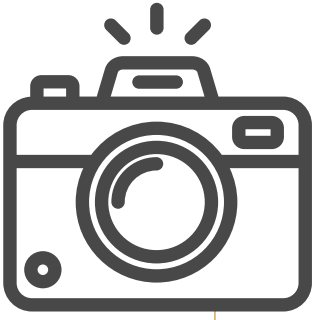
Get priority access to Newark Showground's Christmas Party bookings!



ADULTS

COMPETITION: Take your best photo of Nottinghamshire's Countryside!

CLOSING DATE:
31 MARCH 2026



MAJOR
PRIZE TO BE
WON!

This year we are running a photography competition for amateur photographers, the theme being 'Nottinghamshire's Countryside Captured'. Share your most stunning shots that showcase the beauty of Nottingham's countryside, whether it's the wonderful wildlife, a special sunset or anything in between!

Capture the essence of Nottinghamshire's natural beauty. Submit your photo today!

The winning entry will win a year's membership to the Newark & Notts Agricultural Society, which includes VIP access to the Nottinghamshire County Show on 9 May 2026!

A panel of judges will pick the winning photo. Please email your photo entry to show@newarkshowground.com with the subject header 'NCS Photography Adult' or send to: FAO Show Newark Showground, Lincoln Road, Newark, Nottingham, NG24 2NY (Only one entry per person.) Please include your name, contact number & email. Closing date is 31 March 2026. Entries may be posted on our social media channels.

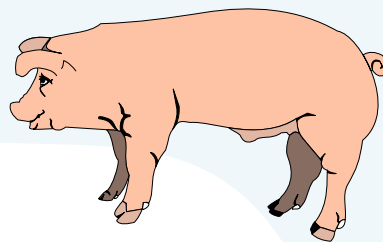
TEST YOUR KNOWLEDGE:

1. What number show will the Nottinghamshire County Show be in 2026?

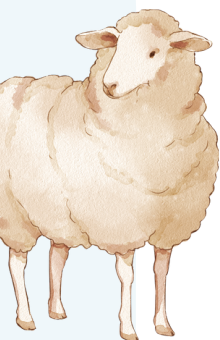
2. What 3 things is the Newark & Notts Agricultural Society dedicated to do?

3. How many straw bales were at last years show?

4. How many rosettes were awarded at last years show?



PRIZES



KS3 Individual Prizes for each of the competitions:

Notts Adventures: £100 Voucher (2 Adults, 2 Children)

Adventures await at Mill Waters, Kirkby in Ashfield with fun activities for all ages.

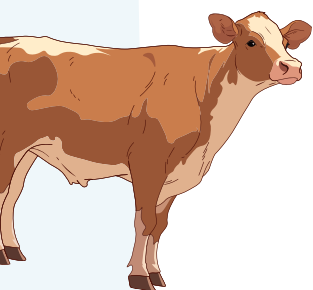
Experience high-flying excitement on the shore of King's Mill Reservoir. Take on a high ropes course with High Trek Plus. Bounce around the Net Park. Brace yourself for the thrill of the 100m Zip Line Experience or take on The Drop into an airbag. Venture out onto the reservoir with new water-based activities including pedalos, kayaks and stand-up paddleboards. Great for all skill levels!

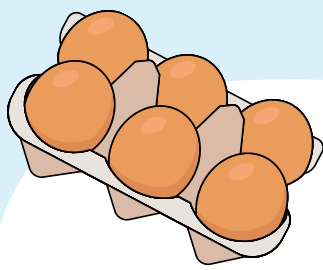
Enjoy unforgettable adventures in the heart of nature.

Schools with most KS3 Entries Prize:

Notts Outdoors: Bring a Climbing Wall to your School

Win an unforgettable prize with a climbing wall brought straight to your school for the day! Students will experience an exciting, confidence-boosting challenge that promotes physical activity, teamwork, and perseverance. A truly memorable reward that inspires and motivates pupils.





MAKE, BAKE & GROW

AT THE NOTTINGHAMSHIRE COUNTY SHOW

Are you a budding baker, preserve maker or gardener? We've got something for you!

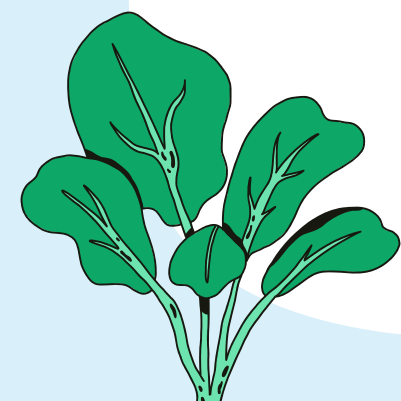
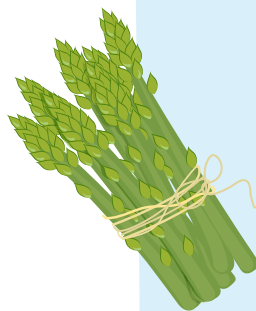
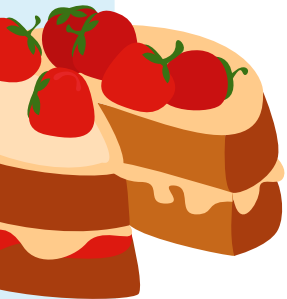
Whether you're a beginner or more experienced, these competitions are open to everyone - Including children's classes.

**ENTER
NOW**

**TEST YOUR SKILLS & ENTER NOW:
nottinghamshirecountyshow.com**

ENTRIES CLOSE: 15 APRIL 2026

 **Newark & Notts
Agricultural Society**





**We hope you can join us on 9 May 2026 at
Newark Showground and experience the best of
farming & rural life from the county!**

nottinghamshirecountyshow.com



**Did you know that the Newark & Notts Agricultural
Society organise two other shows:**

**The Newark Vintage Tractor & Heritage Show -
7 & 8 November 2026**

The Midlands Machinery Show

**For more information about the Society and our
shows, please visit:**

newarkandnotts.com

