

10 May 2025

Experience the best of farming & rural life from your county

Newark Showground
nottinghamshirecountyshow.com

3
COMPETITIONS
— DETAILS
INSIDE



School Resource Pack

INCLUDES
A MAJOR
PRIZE!

 Newark & Notts
Agricultural Society

In partnership with  Nottinghamshire
County Council





ABOUT US

Nottinghamshire County Show will be at Newark Showground on the 10 May 2025, one of the first big agricultural shows of the season!

Every year, the show highlights the vital role of agriculture in our lives.

Celebrating everything from food production to the beauty of our local countryside, reminding us just how essential farming is for our economy, food industry and our daily life.

Showcasing the best of farming, countryside and rural life, celebrating our local agricultural community with attractions including livestock, equine, local food producers and craft stalls, countryside competitions, traders and more!

For more information please visit:

www.nottinghamshirecountyshow.com

HOW THIS PACK WORKS

This pack is designed to help teachers and parents get young people (4-11) involved and get excited about the upcoming show, as well as, to help educate them on farming and the countryside.

You will find lots of information about the Nottinghamshire County Show and farming, along with a host of activities and competitions to help support their understanding, raise awareness and interest in agriculture, farming and rural life!

SOME FACTS ABOUT THE NOTTINGHAMSHIRE COUNTY SHOW



The 2025 show will be the 140th!
The first-ever show was held in 1868,
however, over the years, it has been
cancelled due to several factors
including the World Wars, Foot
& Mouth disease and COVID-19.

 Newark & Notts
Agricultural Society



The show is organised by the Newark
& Notts Agricultural Society - a charity
dedicated to promote, celebrate and
champion agriculture across the
Midlands region and beyond.




It was originally called 'The Newark
Show' and renamed the
'Nottinghamshire County Show' in 1989.



FUN FACTS ABOUT LAST YEAR'S SHOW!

 Sunshine from dusk to dawn

 663 livestock, 567 horses and 93 rabbits at Newark Showground

 Record-breaking entries in Floral Arts and Make, Bake & Grow classes


 Over 50 hours of judging across 20 rings

 More than 550 winners recognised

 9.5 hours of Main Ring entertainment

 28 student education grants awarded

 10 individuals recognised for their Service to Agriculture

 More than 230 judges, stewards and volunteers who kindly gave their time to make the show a huge success



Nottinghamshire's Farming Facts



If all the wheat grown in Nottinghamshire was made into bread, there would be **452 Million** loaves



Nottinghamshire's farmers generate **£292 million** from all the livestock, crops and produce they grow. Farming employs **4,100 people** in the county



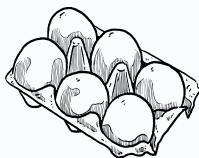
We could make **342 million** pints of beer from all the barley Nottinghamshire's farmers grow



5,000ha of vegetables and potatoes in Nottingham



67.5% The total farmed area of the county looked after in environmental schemes



Nottinghamshire hens lay **404 million** eggs each year and we produce more than **2 million** roast chickens



There are more than **1,677 miles** of rights of way in Nottinghamshire



Nottinghamshire producers grow the equivalent of **61.7 million** 1kg bags of sugar a year



All facts provided by the National Farmers Union



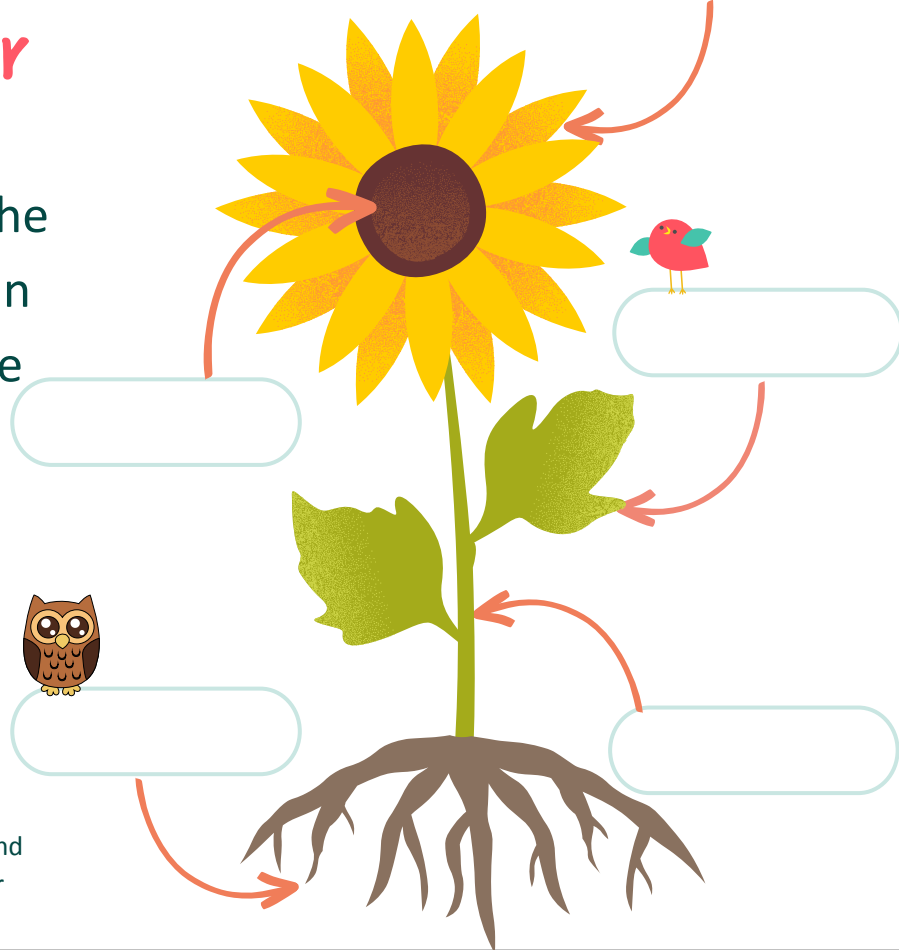
SUNFLOWERS ARE GROWN AS A COVER CROP

Parts of a sunflower

Can you name the different parts of a sunflower? Using the words from the list below, can you write them where they're supposed to go...

Roots Leaf
Stem Seeds
Petal

Did you know... A cover crop is a plant that is used primarily to slow erosion, improve soil health, enhance water availability, smother weeds, help control pests and diseases, increase biodiversity and bring a host of other benefits to your farm.



GROW YOUR OWN SUNFLOWER AT HOME OR IN YOUR CLASSROOM

To grow your own sunflowers all you need is a pot, sunflower seeds and some soil, no garden is required.

It will take about 8 weeks for your sunflowers to grow, so let's get started.

What you need:



1. A pot or paper cup

2. Soil

3. Sunflower seeds

1



Put some damp soil in your pot or cup so it comes up almost to the top.

Then poke your finger in the soil to make a hole for your sunflower seed.

2



Drop a sunflower seed into the hole and cover it with a little soil.

Spray or sprinkle some water on top.

3



Put the pot or cup in a sunny warm spot. Spray the soil with water whenever it feels dry.

4



Your plant should pop up through the soil after about 1 or 2 weeks.

5

When your plants grow too big for the cups, plant them in a bigger flowerpot or in a sunny spot outside.

6

Your plant should flower after about 8 weeks.



We would love to see your Sunflower! Take a photo of your sunflower with a measuring tape alongside it to show us how tall it is. Send all your photos to show@newarkshowground.com with the subject header 'NCS Sunflower.'

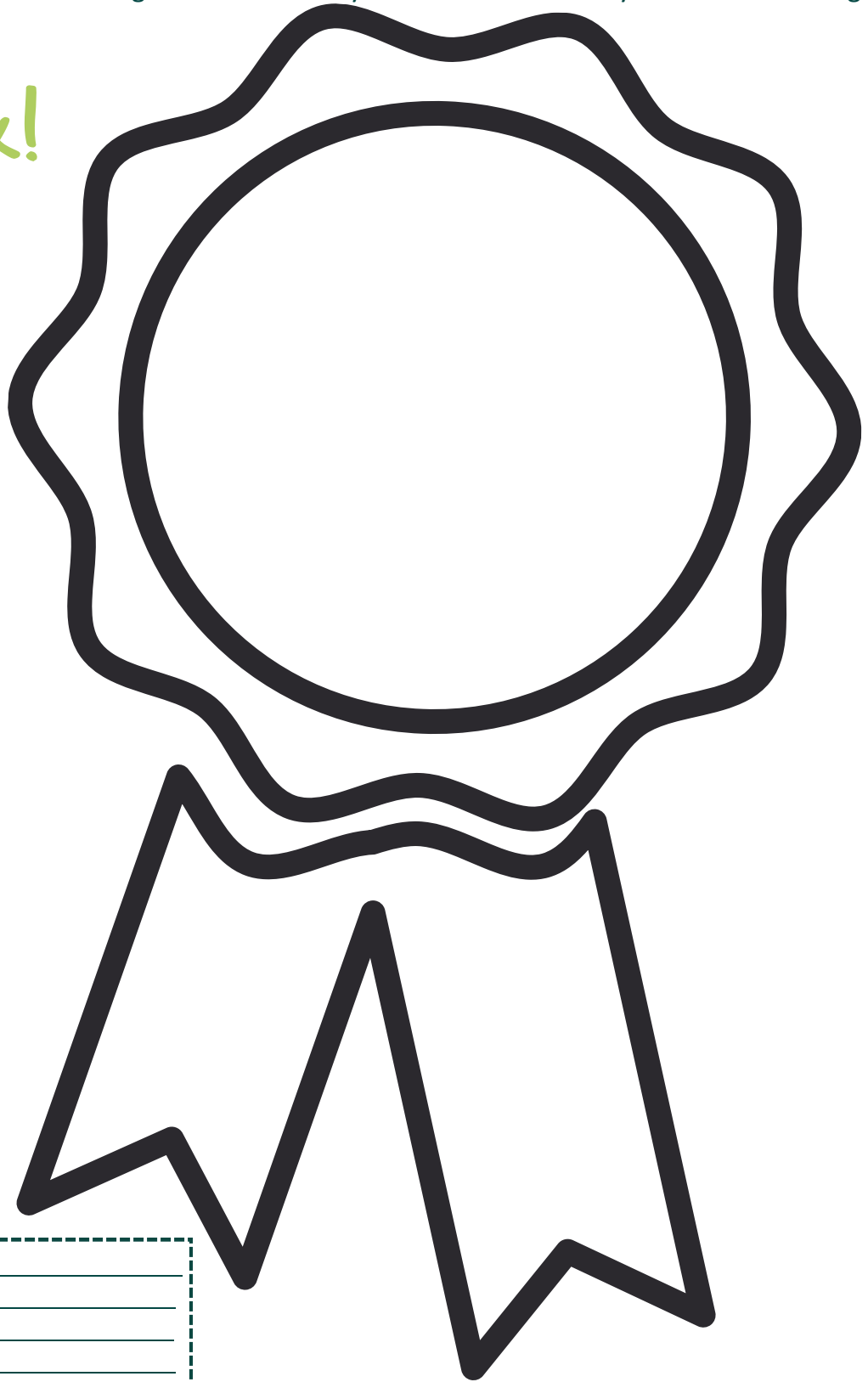
COMPETITION:

CLOSING DATE:
31 MARCH 2025

Design a 1st-place Nottinghamshire County Show rosette

Use the template to design a 1st-place Nottinghamshire County Show rosette. The winning entry will win a family ticket to the Nottinghamshire County Show on the 10 May at Newark Showground. Please use this outline.

Good luck!



Name: _____
Age: _____ School: _____
Home Address: _____


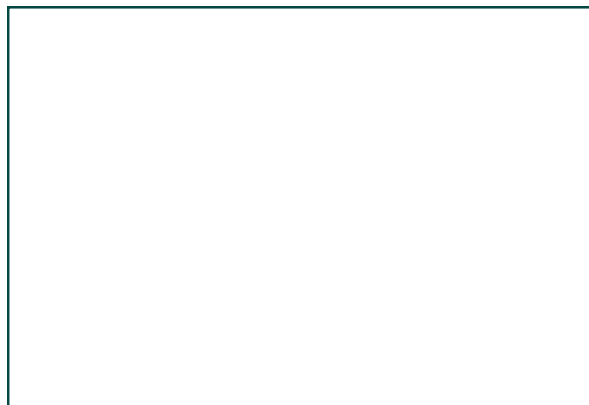
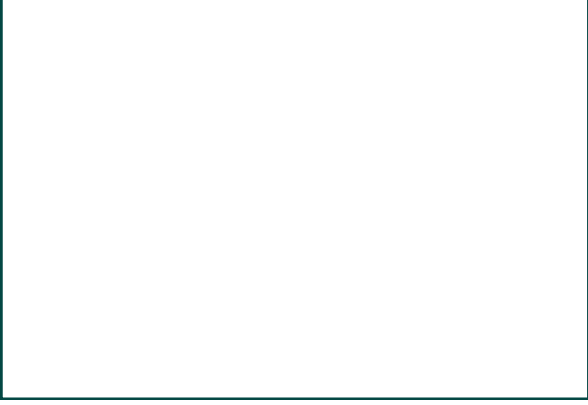
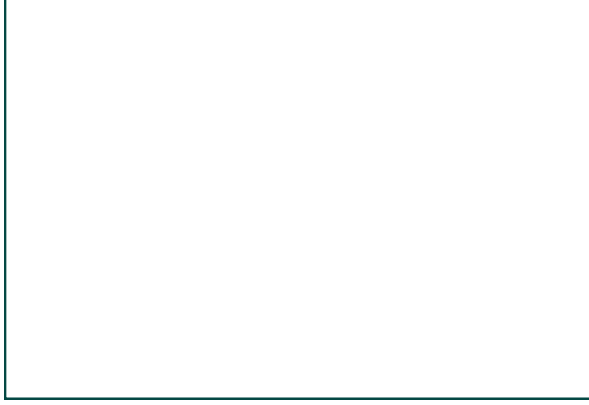


Parent/Guardian signature: _____
Contact no/email: _____

A panel of judges will pick the winning rosette design. Please email your entry to show@newarkshowground.com with the subject header 'NCS Rosette' or send to: FAO Show Newark Showground, Lincoln Road, Newark, Nottingham, NG24 2NY (Only one entry per person.) Closing date is 31 March 2025. Designs may be posted on our social media channels.

COMPETITION: Write your own story as a day in the life of a farmer!

CLOSING DATE:
31 MARCH 2025

Use the storyboard below to create a 'Day in the life of a Farmer.' The winning entry will win a family ticket to the Nottinghamshire County Show on the 10 May at Newark Showground.

	
<hr/> <hr/> <hr/>	<hr/> <hr/> <hr/>
	
<hr/> <hr/> <hr/>	<hr/> <hr/> <hr/>
	
<hr/> <hr/> <hr/>	<hr/> <hr/> <hr/>

Name: _____ Age: _____ School: _____
Home Address: _____
Parent/Guardian signature: _____ Contact no/email: _____

A panel of judges will pick the winning storyboard. Please email your entry to show@newarkshowground.com with the subject header 'NCS Storyboard' or send to: FAO Show [Newark Showground, Lincoln Road, Newark, Nottingham, NG24 2NY](#) (Only one entry per person.) Closing date is 31 March 2025. Entries may be posted on our social media channels.

COMPETITION: Take your best photo of Nottinghamshire's Countryside!

CLOSING DATE:
31 MARCH 2025



This year we are running a photography competition to young budding photographers, the theme being 'Nottinghamshire's Countryside Captured'. Share your most stunning shots that showcase the beauty of Nottingham's countryside, whether it's the wonderful wildlife, a special sunset or anything in between!

Capture the essence of Nottinghamshire's natural beauty. Submit your photo today!

MAJOR
PRIZE TO BE
WON!

The winning entry will win a year's membership to the Newark & Notts Agricultural Society, which includes VIP access to the Nottinghamshire County Show on 10 May 2025!

A panel of judges will pick the winning photo. Please email your photo entry to show@newarkshowground.com with the subject header 'NCS Photography' or send to: FAO Show Newark Showground, Lincoln Road, Newark, Nottingham, NG24 2NY (Only one entry per person.) Please include your name, age, school, home address and contact number/email. Closing date is 31 March 2025. Entries may be posted on our social media channels.

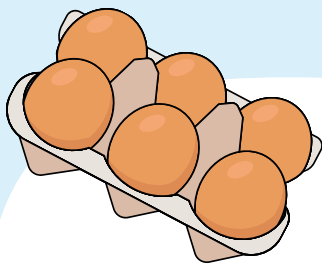
TEST YOUR KNOWLEDGE:

1. What year was the first-ever Nottinghamshire County Show?

2. Which charity organises the show?

3. What was the Nottinghamshire County Show originally called?

4. How many livestock & horses did we have at last years show?



MAKE, BAKE & GROW

AT THE NOTTINGHAMSHIRE COUNTY SHOW

Are you a budding baker, preserve maker or gardener? We've got something for you!

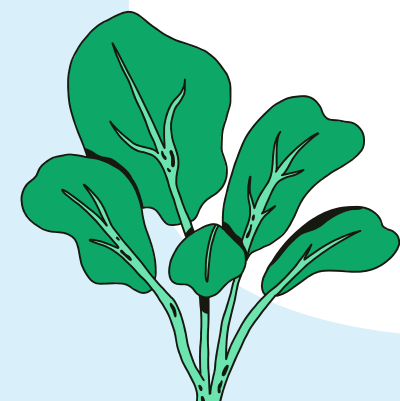
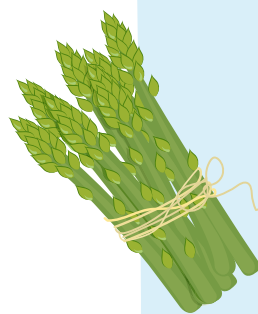
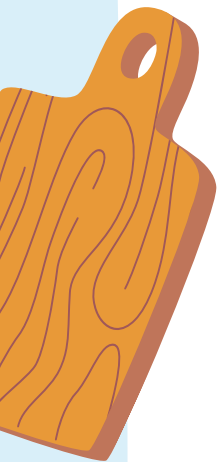
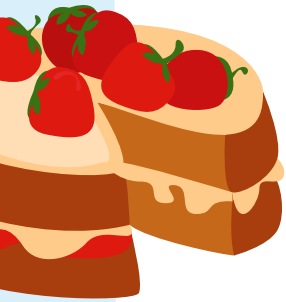
Whether you're a beginner or more experienced, these competitions are open to everyone - Including children's classes.

ENTER NOW

**TEST YOUR SKILLS & ENTER NOW:
nottinghamshirecountyshow.com**

ENTRIES CLOSE: 16 APRIL 2025

 **Newark & Notts
Agricultural Society**





We hope you can join us on the 10 May 2025 at Newark Showground and experience the best of farming & rural life from the county!

nottinghamshirecountyshow.com



Did you know that the Newark & Notts Agricultural Society organise two other shows:

**The Newark Vintage Tractor & Heritage Show -
8 & 9 November 2025**

The Midlands Machinery Show - 19 November 2025

For more information about the Society and our shows, please visit:

newarkandnotts.com





Become a Member today and enjoy a host of benefits

Whether you're an industry professional, a rural family or a young farmer eager to sow the seeds of your future, we welcome you to embrace the future of farming together with us.

Join us and become a member for 2024.
nottinghamshirecountyshow.com/membership

Proud organisers of:



Free, VIP admission to our three showcase events

PLUS enjoy the private members area at our shows



Keep up to date with the latest guidance



Education & grant support for the young rural community



Attend Agri social events with like-minded people

For more information scan here:

